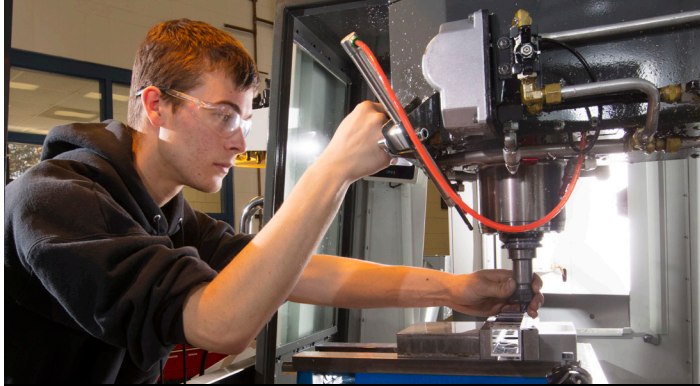
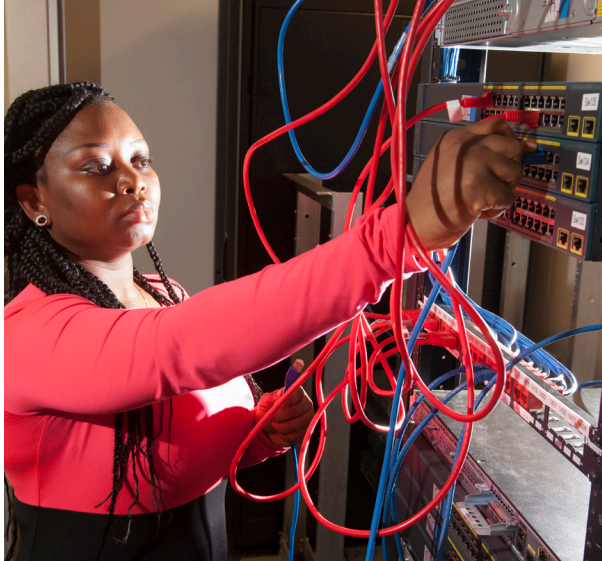


STRATEGIC PARTNER PROGRAM

The Strategic Partner Program is the NDSCS Premier Business program to meet workforce needs in southeast North Dakota. This is the highest level of partnership participation and is designed for businesses looking to work with administration, faculty and staff, and in turn, gain exposure to prospective students.

This program has direct involvement in curriculum development, recruitment and faculty training to the level of vendor certification and compliance. Through this partnership, businesses gain significant brand exposure through logo and signage placement, news releases, interactive content and alumni newsletter articles. In return, a Strategic Partner commits to provide academic program correspondence, materials, supplies, personnel, equipment and a significant annual financial investment.



CAREER ACADEMY CURRICULUM COMMITTEE

The NDSCS Workforce Partner program provides business leaders a seat at the table to recommend Career Academy programs and services. Working together, the Committee will investigate, develop and promote plans for student entry points including regional high schools and all post-secondary institutions. The Committee will explore state and national certification programs and determine the required expertise needed to offer certification programs, as well as license and diploma programs at the Career Academy.



DIVISION FOR WORKFORCE AFFAIRS
TRAINND | APPRENTICESHIPND | SKILLSND

PARTNERSHIP PROGRAMS

Strategic Partner
Workforce Partner

CONTACT
NDSCS Partnership Programs
701-231-6915

NDSCS.EDU/PARTNERSHIPS

20
19

1/19



NORTH DAKOTA STATE COLLEGE OF SCIENCE

NDSCS.EDU/PARTNERSHIPS

WORKFORCE PARTNER PROGRAM

The goal of this annual membership program is to meet employer workforce needs. With student interaction at the forefront, benefits include:

- ◆ Access to students, prospective students, faculty and staff
- ◆ Opportunities to sponsor students through scholarships
- ◆ Enhanced Career Services access
- ◆ Pricing advantages for employee career designation courses
- ◆ Workforce trend information

SEE ITEMIZED BENEFITS CHART!



WORKFORCE PARTNER PROGRAM LEVELS

	Platinum \$10,000	Gold \$5,000	Silver \$2,500	Bronze \$1,000	Supporter \$500
Career Academy Curriculum Committee	✓	✓	✓		
NDSCS Enhanced Career Services Access	✓	✓	✓		
Student Sponsorship Listing	✓	✓	✓	✓	✓
Public Relations All Materials	All Materials	All Materials	All Materials	All Materials	
Digital Recognition	Extra Large Logo	Large Logo	Medium Logo	Small logo	
Marketing Giveaways	✓	✓	✓	✓	
Business Workforce Events	2	2	2		
Partnership Recognition Lobby Entrance	Extra Large Logo	Large Logo	Medium Logo		
Employee Training Course(s) <i>See quarterly catalog for course eligibility.</i>	80 Hours	40 Hours	20 Hours		
Contract Training Discount	15%	10%	5%		
Video Conferencing Use	40 Hours	20 Hours			
Meeting Room Space	40 Hours	20 Hours	10 Hours		
Computer Lab Space	40 Hours	20 Hours	10 Hours		
Workforce Subject Matter Expertise	6 Hours	4 Hours	2 Hours		

WORKFORCE PARTNER TRAINING BENEFITS

The TrainND program at NDSCS offers high quality classes customized for your business. Our team provides services that add true value to North Dakota's business sectors that include, manufacturing, health care, transportation, construction trades and information technology. Your employees will advance their professional skills to become more productive and achieve personal fulfillment. Members benefit by increasing employee satisfaction and morale, adaptation to new technologies, and organizational development.

