



NDSCS  
**DENTAL  
CLINIC**

**\$25**

NDSCS Employee  
& Student Rate with  
NDSCS I.D.  
Card

VISIT OUR  
DENTAL  
DEPARTMENT  
FOR **TEETH CLEANINGS**  
& **X-RAYS!**

**FALL**

Monday • 9 p.m.  
Monday-Wednesday • 1 p.m.

**SPRING**

Monday-Wednesday • 8 a.m.  
Monday-Thursday • 1 p.m.

**CALL TO RESERVE YOUR  
APPOINTMENT TODAY!**

701-671-2333





NORTH DAKOTA STATE COLLEGE OF SCIENCE

# WATCH *Movies + More* ON CAMPUS



Streaming available  
on your personal devices

[movies.ndscs.edu](http://movies.ndscs.edu)



1



Connect to NDSCS  
WiFi network.

2



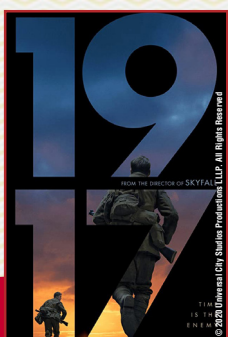
Install the **SWANK MEDIA  
PLAYER APP** available in the  
App Store & Google Play.

3



In your device's web  
browser, visit the url above  
& start watching movies!

★ **New titles added every month!** ★





# North Dakota State College of Science

## VEHICLE REGISTRATION

NDSCS ID # \_\_\_\_\_ Permit # (for NDSCS Police Dept. use) \_\_\_\_\_

Last Name \_\_\_\_\_ First Name \_\_\_\_\_ MI \_\_\_\_\_

Address \_\_\_\_\_

Phone \_\_\_\_\_

**The following vehicle, which will be legally in my custody, is to be registered in my name:**

Make \_\_\_\_\_ Model \_\_\_\_\_ Year \_\_\_\_\_

Vehicle License # \_\_\_\_\_ State \_\_\_\_\_ Driver's License # \_\_\_\_\_ State \_\_\_\_\_

*I have read the regulations at **NDSCS.edu/Parking** and understand that it is my responsibility to comply with traffic and parking regulations.*

Signature \_\_\_\_\_ Date \_\_\_\_\_

# Wildcat Connector

2020/2021

ITS Service Desk: 701-671-3333

Vol. 118, No. 1

## IMPORTANT Information about the Accounts You Will Use at NDSCS

You have **two** different accounts you need to use at NDSCS. Carefully note the password for each one.

**YOUR NDUS/CAMPUSCONNECTION ACCOUNT** gives you access to systems such as CampusConnection, campus wifi, your NDSCS email, DUO, and Blackboard.

**YOUR NDSCS ACCOUNT** gives you access to college-owned computers in labs and classrooms, and the Hoonuit video learning service.

### Connect to NDSCS Wifi in Wahpeton

1. Connect to the network called *NDSCS*.
2. Enter your NDUS/CampusConnection username and password when prompted.  
NOTE: Whenever you change your NDUS/CampusConnection username and password, you will need to log-in again to access wifi.

### Setting up Your NDSCS Account

If you have not done so you need to set up your local NDSCS account to access computers in labs, classrooms and in the Library. To activate your NDSCS account, go to:

<https://apps.ndscs.edu/accounts>

### Your NDSCS Email Account

Your NDSCS email account is an official communication channel between you and the college.

*All NDSCS students are expected to check their NDSCS email account for important messages.*

1. To access your NDSCS email account, go to <http://mail.office365.com>
2. **IMPORTANT:** Log-in to your email using your Campus Connection ID (usually firstname.lastname) plus [@ndus.edu](mailto:@ndus.edu)

For example, if your NDSCS email address is [jordan.mcguiffin@ndscs.edu](mailto:jordan.mcguiffin@ndscs.edu), log-in using [jordan.mcguiffin@ndus.edu](mailto:jordan.mcguiffin@ndus.edu).

### Free Version of Microsoft Office

NDSCS students can install Office on up to five computers and five mobile devices at no charge. Students be online once every 30 days to verify their eligibility.

Follow these steps to download and install Office:

1. Go to [www.ndscs.edu](http://www.ndscs.edu) and select *Email*
2. Log in with your email address (typically [firstname.lastname@ndus.edu](mailto:firstname.lastname@ndus.edu)) and password.
3. Click the circle with your initials in the upper right corner of the screen
4. Choose *My Account*.
4. Click *Install Office*.

### Frequently Asked Questions About Office for Students

**Q:** Is this a full version of Office and available for offline use?

**A:** Yes, this is a full version of Office. However, students must connect to the Internet at least once every 30 days to verify that they are still eligible to use the software.

**Q:** How long can I keep my Office license?

**A:** NDSCS Students enrolled for one or more credits may continue to use the software. Students must go online once every 30 days so Office can verify their eligibility.



## Adding Email to Your Phone or Mobile Device

ITS recommends the Microsoft Outlook app for a more consistent experience with your Office 365 account. The Microsoft Outlook app can be downloaded from the app store for your phone or mobile device. After you download the Microsoft Outlook app, follow the steps below.

1. Open the Outlook app on your phone or tablet
2. Click *Get Started*
3. Enter your username (usually Firstname.Lastname@ndus.edu)
4. Click *Continue*
5. Enter your NDUS password
6. Click *Sign in*
7. Click *Skip* when prompted to add another account
8. Click through the tutorial screens or click *Skip* to be taken into your account

## NDSCS Laptop Program

You can purchase a laptop through the NDSCS ITS Department. Two models are available, depending on your field of study. All laptops have an accidental damage warranty and on-site service is available at the ITS Service Desk in the Student Center.

### Why purchase a laptop through ITS?

Students may charge a laptop to financial aid, if approved by the NDSCS Business Office.

**FREE TECHNICAL SUPPORT** through NDSCS, which includes:

- Same-day service at the on-campus location
- Virus and malware removal
- Laptop setup and software installation
- Warranty
- Students have access to a loaner laptop if their laptop needs to be sent in for warranty work.

The **HP Standard 3-Year Warranty** includes replacement of hard drives, memory, multibay devices, etc., except batteries, which have a 1-year warranty.

The **HP 3-Year Accidental Damage Protection Warranty** covers damage such as liquid spilled in the keyboard, accidentally dropping the laptop, and most damage not covered by the standard warranty.

**To purchase a laptop:** The laptop must be either paid in full or covered by financial aid. If paying with financial aid, all paperwork must be complete and there must be enough to cover the cost of the laptop. Written proof from the NDSCS Business Office that your financial aid is allocated to cover the cost of the laptop after all other college expenses are paid is required.

The **Total Laptop Package Price** includes:

- Same day service at the on-campus location.
- Imaging and re-imaging of computers purchased through the College.
- Access to loaner equipment if needed.

**To reserve your laptop... [www.NDSCS.edu/laptops](http://www.NDSCS.edu/laptops)  
or call 701-671-3333 or email [NDSCS.ServiceDesk@ndscs.edu](mailto:NDSCS.ServiceDesk@ndscs.edu)**

# 2020-21 NDSCS LAPTOP SPECIFICATIONS



*\*Recommended for all curriculum except Architectural Drafting and Estimating, or Land Surveying and Civil Engineering Technology*

Model	HP EliteBook 850
Processor	Intel i7 8565U
RAM (memory)	16GB 2400MHz DDR4 (1D)
Hard Disk Drive	256GB Solid State
Video	Intel UHD Graphic 620
Keyboard	Full-sized keyboard with number pad
Webcam	720p HD Web Cam
Communications (wired)	10/100/1000 Onboard NIC
Communications (wireless)	Intel 802.11ac Wireless, Bluetooth 5
Ports/Connectors	2 - USB 3.1, 1 - USB 3.1 Type-C, 1-HDMI
Battery	HP Long Life 3-Cell 56 WHr Long Life
Operating System	Microsoft Windows 10 Pro
Display	15.6 inch diagonal LED Anti-Glare (1920 x 1080)
Warranty	HP Three Year World Wide Limited Warranty HP Three Year Accidental Damage Protection Warranty

**Price:**

**\$ 999** + Sales Tax



*\*Recommended for Architectural Drafting and Estimating, or Land Surveying and Civil Engineering Technology students*

Model	HP ZBook 15 Mobile Workstation
Processor	Intel Core i7-9750H
RAM (memory)	32GB 2666MHz DDR4
Hard Disk Drive	256GB Solid State
Video	NVIDIA Quadro T2000 4GB
Keyboard	Full-sized, back-lit keyboard with number pad
Communications (wired)	100/1000 Onboard NIC
Communications (wireless)	Intel 802.11ac Wireless, Bluetooth 5
Ports/Connectors	3 - USB 3.1, 2 - USB Type-C (Thunderbolt), 1 - HDMI
Battery	HP Long Life 4 Cell 90 WHr Long Life
Operating System	Microsoft Windows 10 Pro
Display	15.6 inch diagonal LED Anti-Glare (1920 x 1080) w/ HD 720p Webcam
Warranty	HP Three Year World Wide Limited Warranty HP Three Year Accidental Damage Protection Warranty

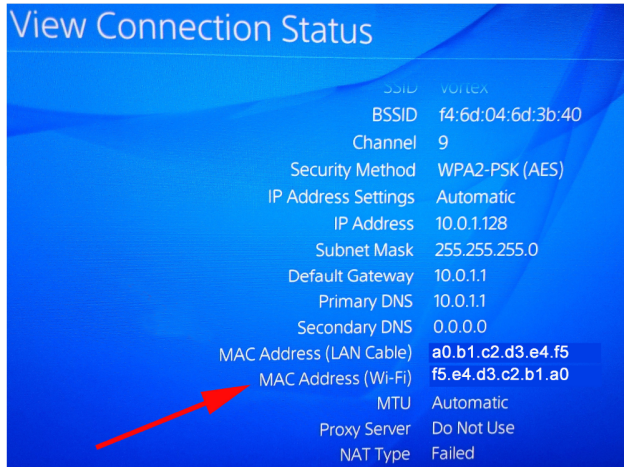
**Price:**

**\$ 1,921** + Sales Tax

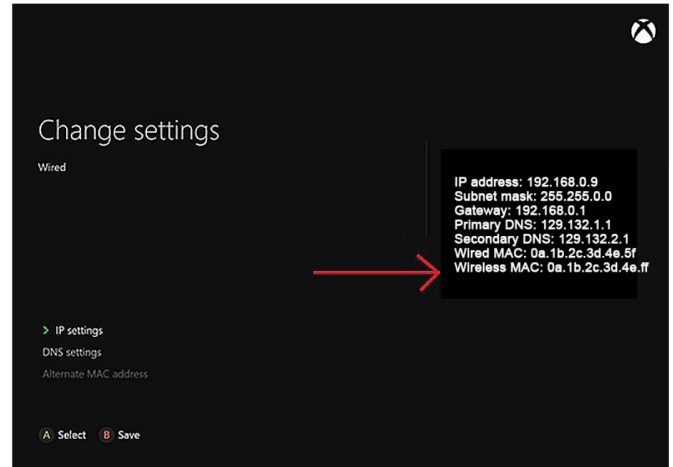
# Connecting a TV or Game Console to the NDSCS Wireless Network



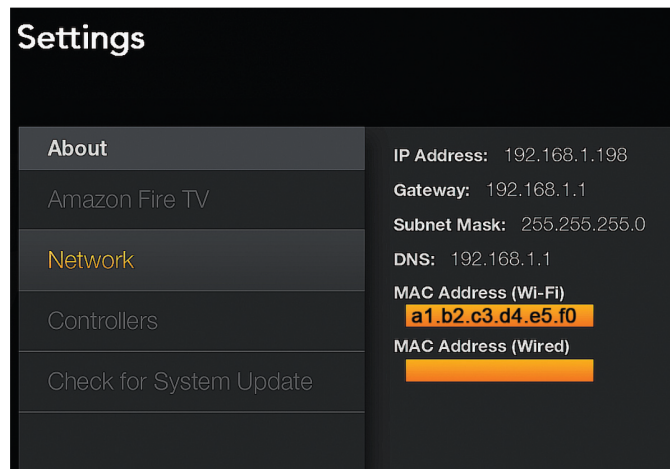
1. Locate the info screen on your device that shows the *wireless* or *Wi-Fi* MAC (media access control) address of your TV or game console.
2. Using your cellphone, take a photo of the screen of your game box or TV that clearly shows the *wireless/Wi-Fi* MAC address. Below are some examples of screens with MAC addresses. NOTE: The MAC address *must* be legible in the photo.



Sony PS4



Xbox One



Smart TV

(Example only. Your screen may look different.)

3. Email the photo to [NDSCS.DeviceRegistration@ndscs.edu](mailto:NDSCS.DeviceRegistration@ndscs.edu) from your NDSCS email account with the type and model of device. *Requests emailed from non-NDSCS accounts will be rejected.*
4. When you receive a confirmation email reply, you are ready to connect to the wireless network called *NDSCS Consoles*.