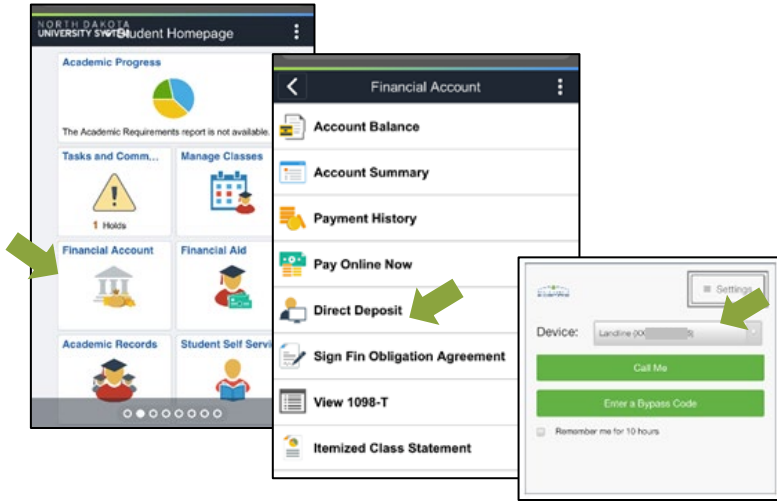


ENROLL IN DIRECT DEPOSIT - QUICK, SAFE, CONVENIENT

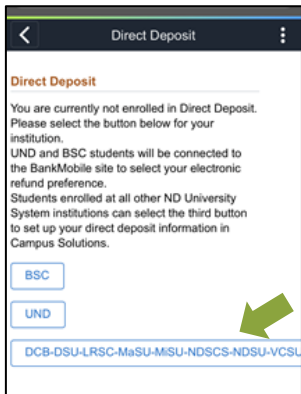
Enroll in direct deposit to have your refund electronically deposited into your bank account.

*Enrolling in direct deposit will only allow refunds to be deposited **into** your bank account; no money will be taken from your bank account.

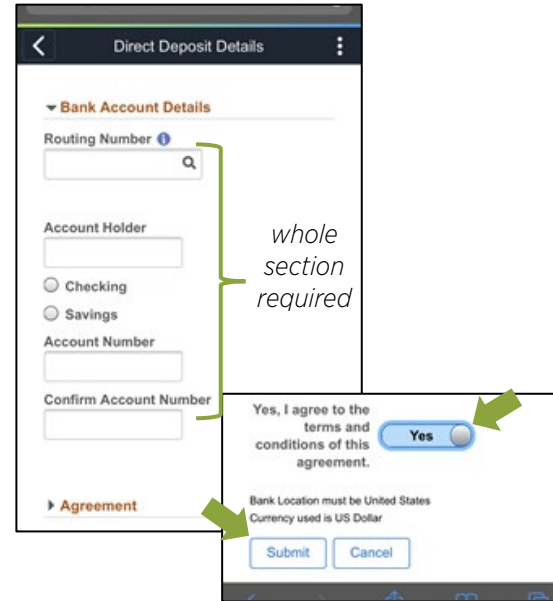
1. Log into your [Campus Connection](#) > Financial Account tile > Direct Deposit. For security reasons, you will be prompted to authenticate with DUO. Choose your device and click Call Me.



2. Choose the 3rd Option that includes NDSCS.



3. Enter Bank Account Details and Agree to the Terms and Conditions. Click Submit.



4. Verify your bank account information is correct. NDSCS Business Affairs will email you whenever a refund has been processed for you.

